

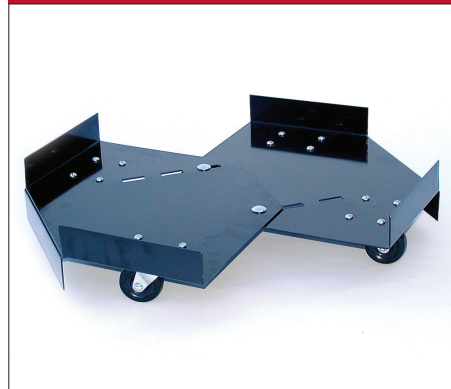
Hard Top – 1 Drum; No drain



- Convenient “roll top” cover slides up and out of the way – allows quick access to drum pumps and funnels.
- 100% polyethylene construction will not rust or corrode.
- Safe Handling – can be moved by forklift under the “shoulder” area or wheeled with the optional dolly.
- Meets SPCC and EPA Container Storage Regulation 40 CFR 264.175.
- Helps meet Stormwater Management Regulations – NPDES, 40 CFR 122.26 (1999).

Spill Containment

Spills Happen.
Be Prepared.



Hard Top Steel Dolly offers safe and efficient material handling.
Product Number: 90417

Hard Top – 1 Drum; No drain

Product Number:	99640
Uniformly Distributed Load:	800 lbs
Sump Capacity:	70 gallons
Color:	Yellow
Product Dimensions:	36" x 36" x 36"
Product Weight:	75 lbs
Cases/Pallet:	8
Pallets/Truck:	9
Regulations:	Meets SPCC & EPA Container Storage Regulation 40 CFR 264.175; Helps meet Stormwater Management Regulations-NPDES, 40 CFR 122.26 (1999)



Made in the U.S.A.

To order, contact your **Authorized SELLARS Distributor**

©2012 Sellars Absorbent Materials, Inc. 6.12